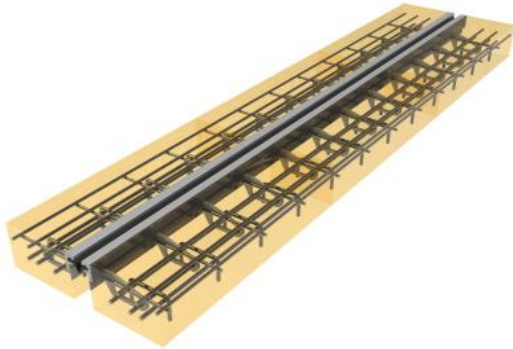
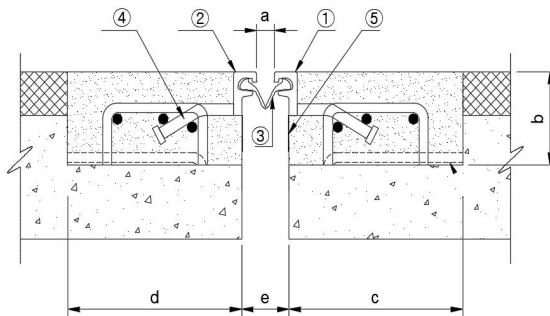


STRIP SEAL EXPANSION JOINT



Feature

- Accommodation of traffic loads and movements
- Long durability
- Absolute water tightness



No.	Description
1	Edge beam
2	Edge beam
3	Rubber seal
4	Anchor plate
5	Shuttering plate

Type	Movement(mm)	a			F			BLOCK OUT		
		Min.	Mid.	Max	Min.	Mid.	Max	c	d	b
CSJ 50	±25	5	30	55	35	50	75	200	200	250
CSJ 80	±40	5	45	85	35	75	115	200	200	250
CSJ 100	±50	5	55	105	35	85	135	200	200	250

* The dimensions shown on the above are based on the standard specification and subject to change.

STRIP SEAL EXPANSION JOINT



CAKRA ULUNG SDN BHD (877367-K)

43-2 JALAN NAUTIKA UB20/B

PUSAT KOMERSIL TSB, SUNGAI BULOH SEKSYEN 20

40160 SHAH ALAM SELANGOR

Tel : 03-61515567 Fax : 03-61514655 email : cakracusb@gmail.com

H/P : 012-691 4993 - MR LIEW CHOR CHIN

Website : www.cakraulungsb.com