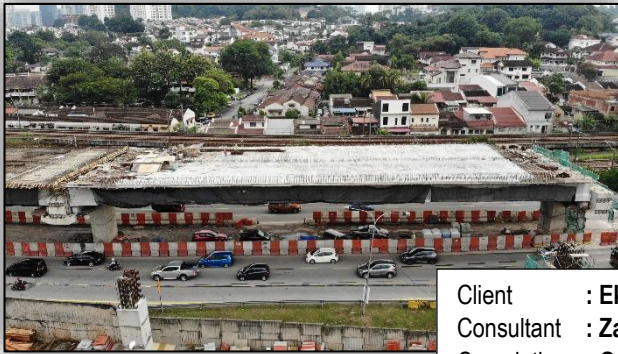


CASE HISTORY

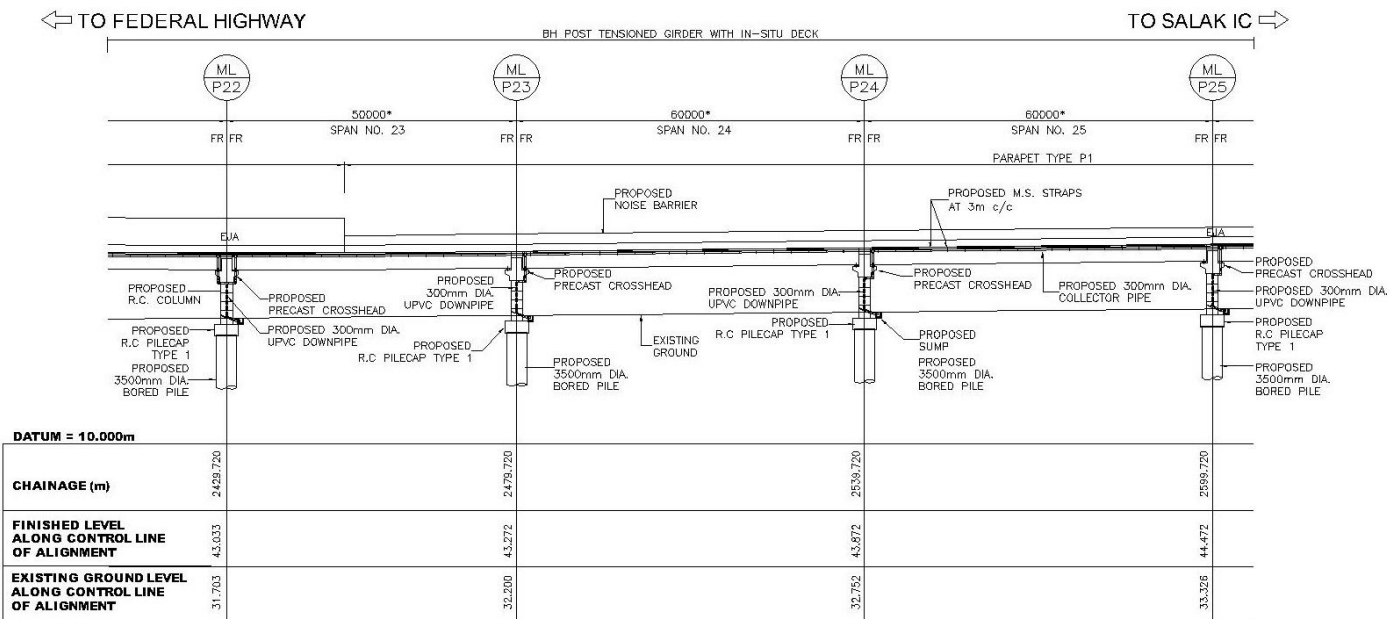
DUKE 3 - SECTION 1
SETIAWANGSA – PANTAI EXPRESSWAY (SPE)



Client : Ekovest Berhad
 Consultant : Zaidun-Leeng Sdn Bhd
 Completion : Ongoing

Duke phase 3 expressway is a 29.8km dual carriageway highway with 7 interchanges and will serve areas such as University Tunku Abdul Rahman, Wangsa Maju, Setiawangsa, Ampang, Tun Razak Exchange, Bandar Malaysia and Kerinchi. The expressway starts from Taman Melati and ends by merging with Kerinchi Link (Sprint Highway).

A total of 205 numbers of BH Girders with beam lengths ranging from 45m to 63m were designed for section 1 of this project. Application of BH Girders of up to 63m length enables bridge piers and portals to be spaced further, thereby eliminating intermediate piers and portals. This eventually allows considerable savings in time and costs, besides minimizing traffic flow disruption.



TYPICAL ELEVATION AT MAINLINE

CASE HISTORY

**RANTAU PANJANG, BESTARI JAYA,
 DAERAH KUALA SELANGOR**

Client : JKR Negeri Selangor
 Consultant : Mohis & Associates Sdn Bhd
 Completion : 2020



The 60m long span bridge serves as an access road over Sungai Selangor, linking Kampung Rantau Panjang to Kampung Bestari Jaya. This bridge will replace the existing bridge at Kampung Rantau Panjang after its completion by end of 2020.

The construction of the new bridge using the 60m BH Girders allows the bridge abutments to be relocated to the river bank, hence eliminating the construction of structures in the river. Structures in the river is not advisable as it has a tendency to trap rubbish and impede river flow. As a result, there was significant savings in terms of costs and time since temporary works such as cofferdam was not required.

