

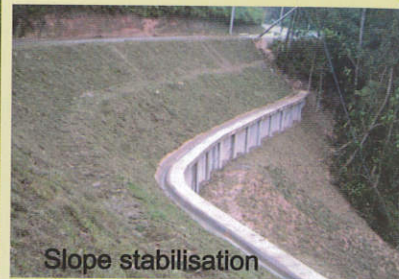
Applications

The WellGuard system is essentially a system of posts, panels and tie back assembled in various combinations according to the needs of the task at hand. Common applications of the WellGuard system include the following:

- Toe protection
- Bank protection
- Slope protection
- Lining of channel
- Urban drainage
- Weir
- Flood wall
- Wing wall
- Drop Structure
- Esplanade
- Backshore protection
- Berthing bay



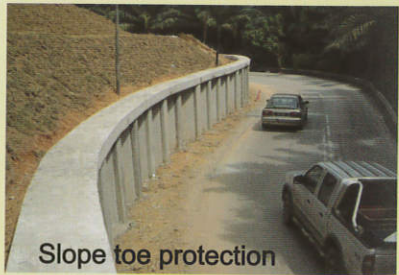
RIVER TOE PROTECTION AND ESPLANADE



Slope stabilisation



Toe protection



Slope toe protection



Bank protection and esplanade