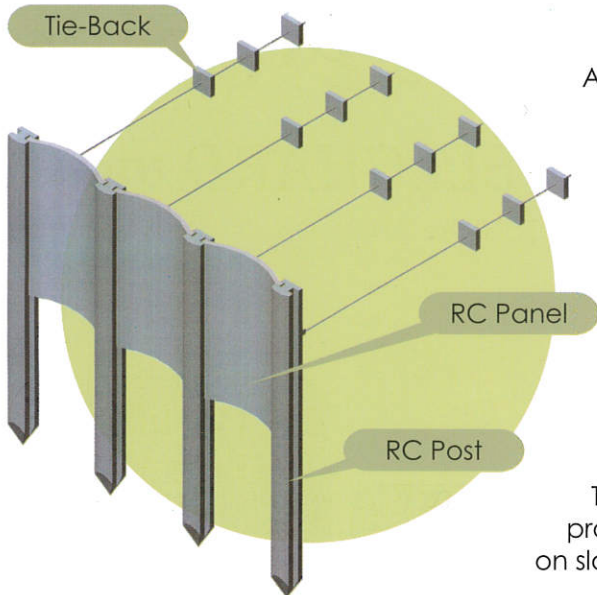


WellGuard Channel and Toe Protection System

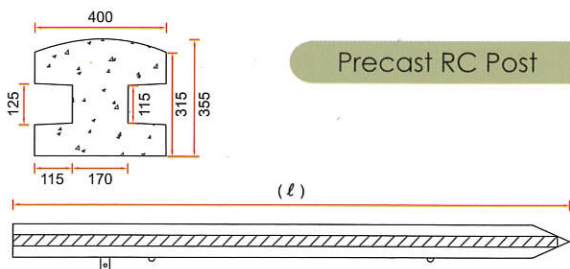


As long as rivers continue to flow, erosion takes place. The natural processes of hydraulic action, attrition, abrasion and corrosion steadily wear away the river banks. As a result of worn banks, adjoining slopes become unstable and are eventually eroded giving rise to the problem of slope failure and frequent flooding. River toe and bank protection is one of the ways to prevent river erosion.

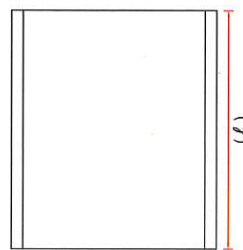
An effective solution is one that will not succumb to the perpetual processes of erosion.

The WELLGUARD SYSTEM is the answer to the effective protection of riverbanks and the prevention of erosion on slopes and shores.

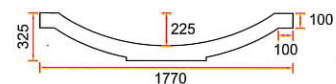
The WellGuard channel and toe protection system is made up of three basic components



Precast RC Post



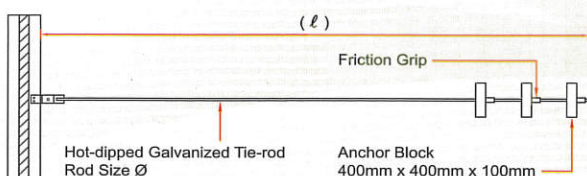
Precast RC Panel



Ultimate Shear and Moment Capacity			
Product	Length(ℓ)mm	Computed Post Capacity	
		Moment (kNm)	Shear (kN)
PT-6	6000	68	106
PT-9	9000	185	144
PT-12	12000	235	180

Ultimate Moment Capacity		
Product	Length(ℓ)mm	Computed Moment Capacity
W-22	2000	21.38
W-23	3000	21.38

Tie-Back



Product	Range		
	Rod Size ϕ mm	Rod Length(ℓ) mm	Anchor Block (400 x 400 x 100)mm
T6-1	20	6000	1pc
T6-2	20	6000	2pcs
T10-3	25	10000	3pcs
T12-3	25	12000	3pcs